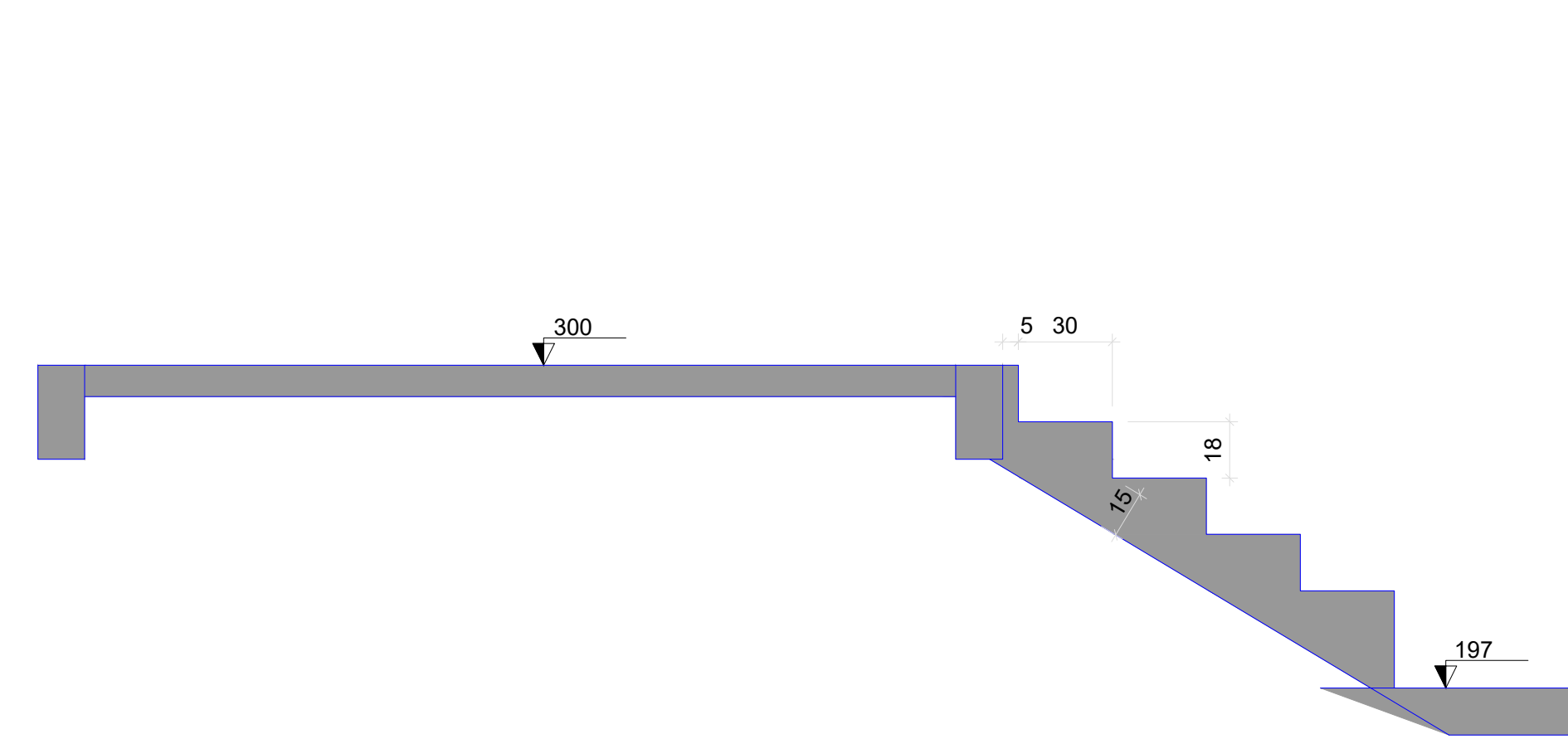
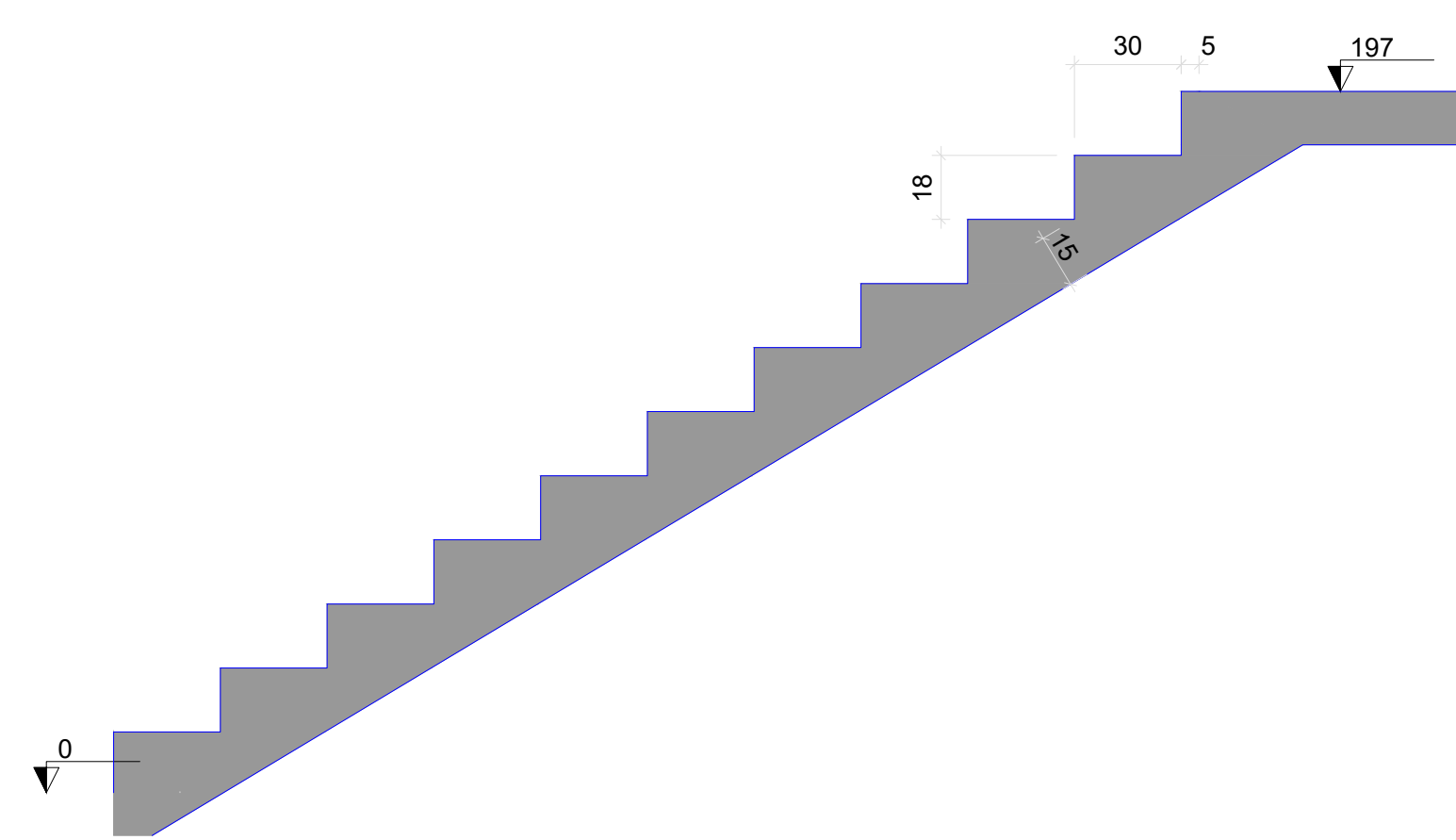


Armação positiva das lajes do pavimento SUPERIOR (Eixo X) escala 1:50

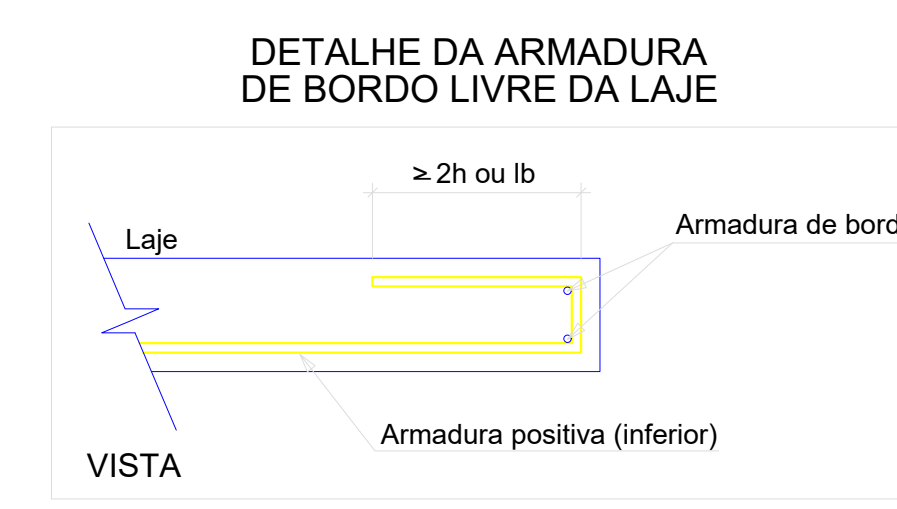
Armação positiva das lajes do pavimento SUPERIOR (Eixo Y) escala 1:50



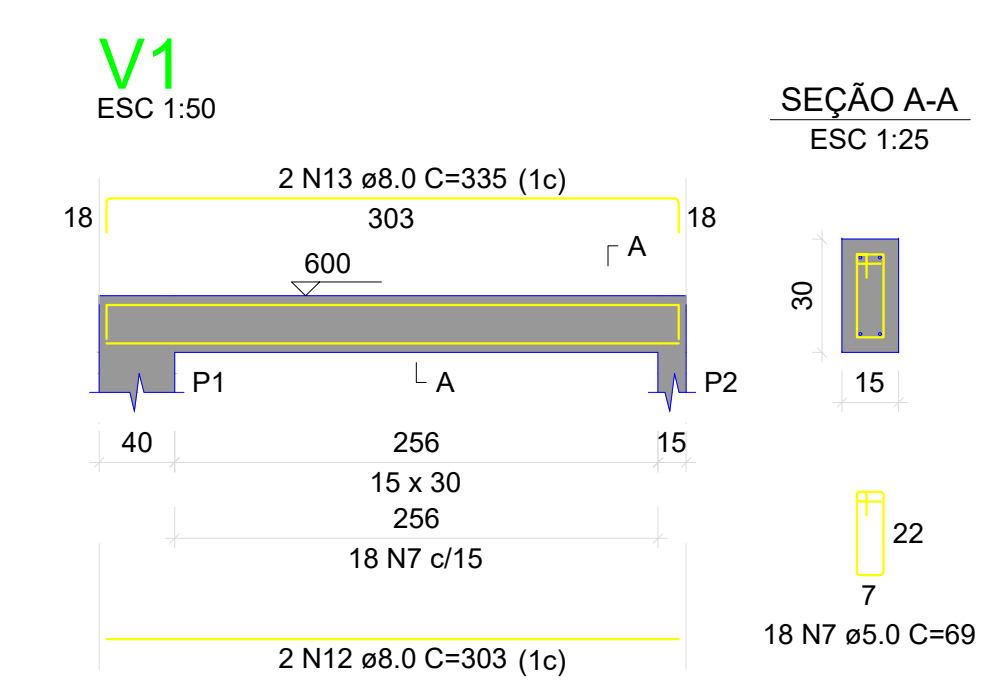
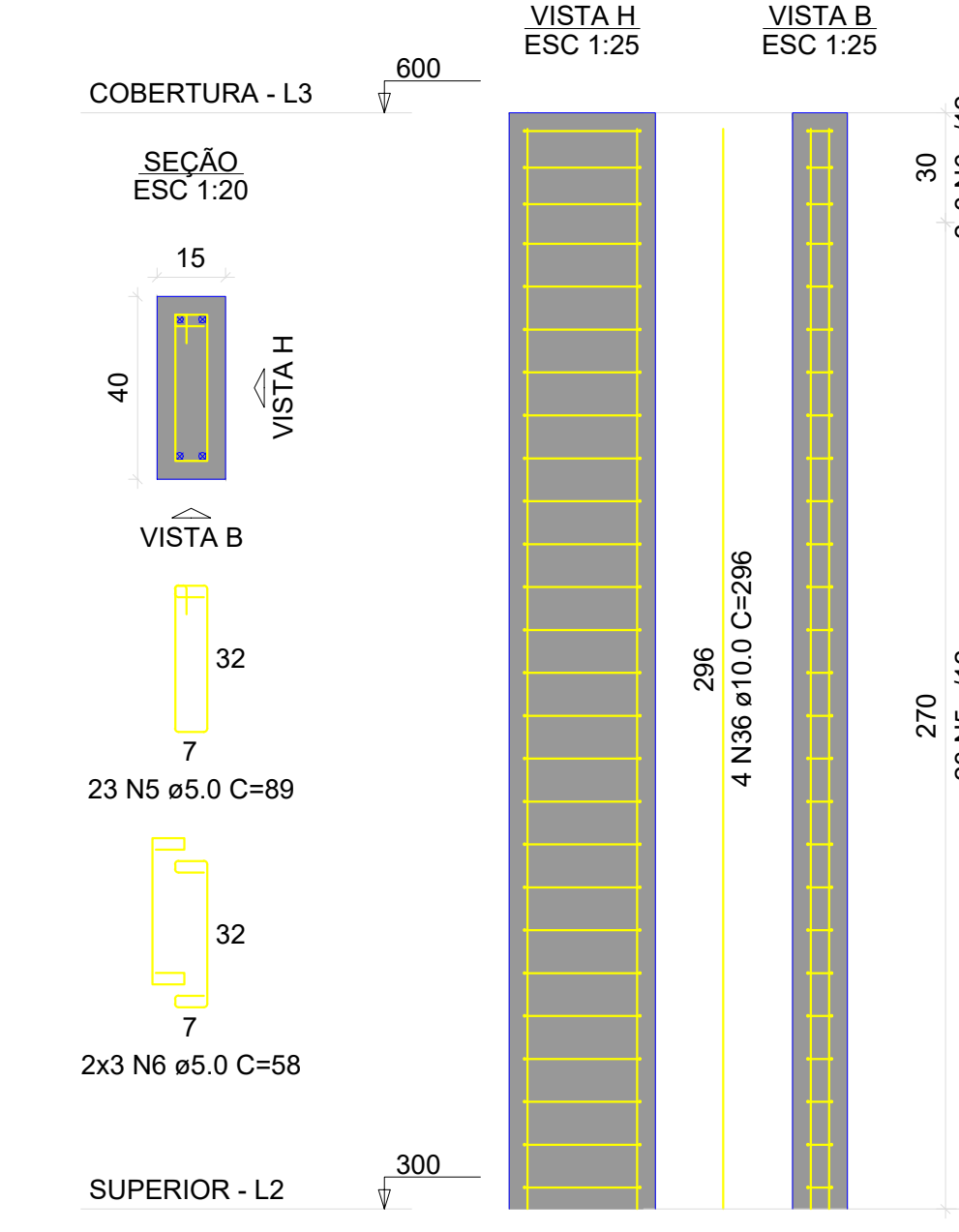
Corte A-A (LE1) ESC 1:25



Corte B-B (LE3) ESC 1:25



P1=P2=P3=P4=P5=P6=P7=  
=P8=P9=P10=P11=P12



RELAÇÃO DO AÇO

Positivo X-L2	Positivo Y-L2	12xP1-L3
V1-L3	V2-L3	V3-L3
V4-L3	V5-L3	V6-L3
V7-L3	V8-L3	V9-L3
V10-L3	V11-L3	V12-L3
V13-L3	V14-L3	V15-L3

AÇO	N	DIAM (mm)	QUANT	C.UNIT (cm)	C.TOTAL (cm)
CA50	1	5.0	16	202	3232
	2	5.0	11	179	1969
	3	5.0	32	305	9760
	4	5.0	14	228	3192
	5	5.0	270	89	24030
	6	5.0	72	58	4176
	7	5.0	104	69	7236
	8	6.3	9	297	2673
	9	6.3	8	208	1664
	10	6.3	14	VAR	VAR
	11	6.3	2	67	134
	12	8.0	2	303	606
	13	8.0	2	335	670
	14	8.0	2	297	594
	15	8.0	2	329	658
16	8.0	4	208	832	
17	8.0	4	240	960	
18	8.0	2	110	220	
19	8.0	2	135	270	
20	8.0	2	305	610	
21	8.0	2	338	676	
22	8.0	2	311	622	
23	8.0	2	347	694	
24	8.0	2	315	630	
25	8.0	2	353	706	
26	8.0	2	253	506	
27	8.0	2	285	570	
28	8.0	4	179	716	
29	8.0	4	211	844	
30	8.0	2	135	270	
31	8.0	2	159	318	
32	8.0	4	202	808	
33	8.0	4	234	936	
34	8.0	2	325	650	
35	8.0	2	357	714	
36	10.0	48	296	14208	

RESUMO DO AÇO

AÇO	DIAM (mm)	C.TOTAL (m)	PESO + 10% (kg)
CA50	6.3	127.7	44.4
CA50	8.0	150.9	65.5
CA50	10.0	142.1	86.4
CA50	5.0	601.2	101.9
PESO TOTAL (kg)			
CA50		196.2	
CA50		101.9	

Volume de concreto (C-30) = 6.96 m³  
Área de forma = 98.80 m²

