

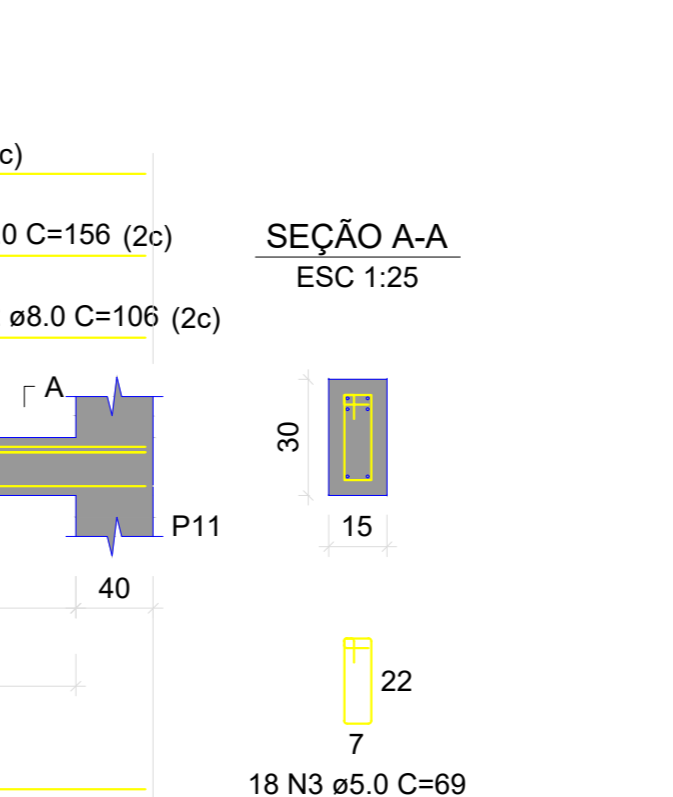
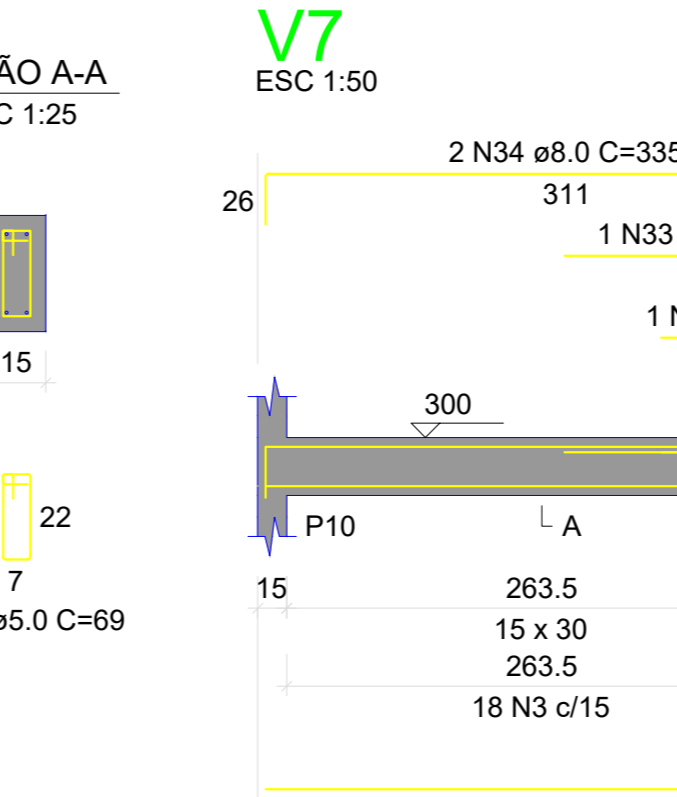
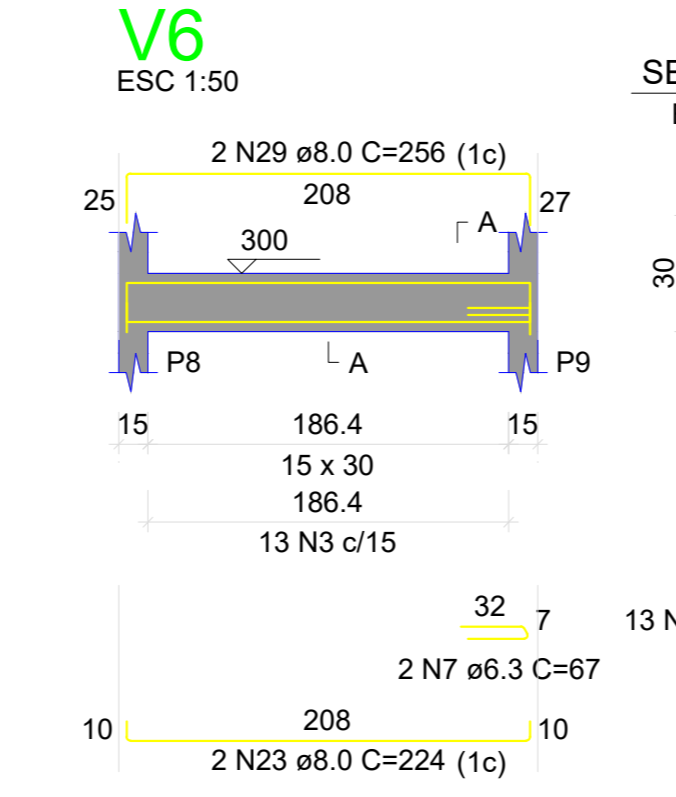
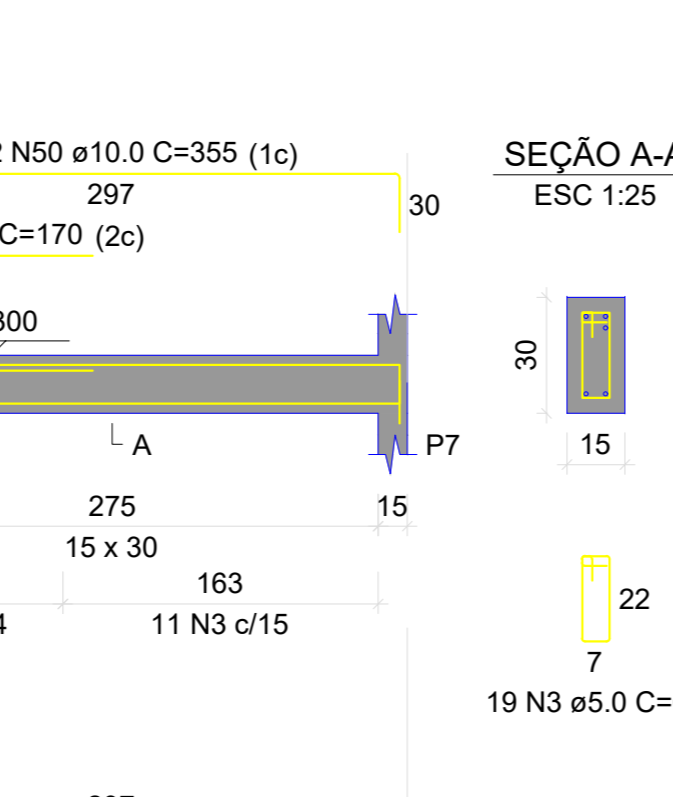
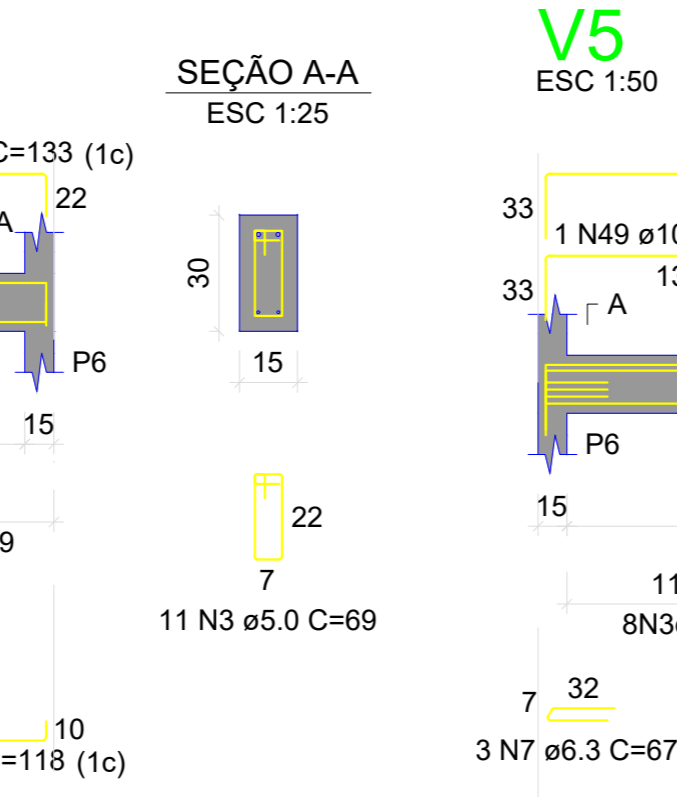
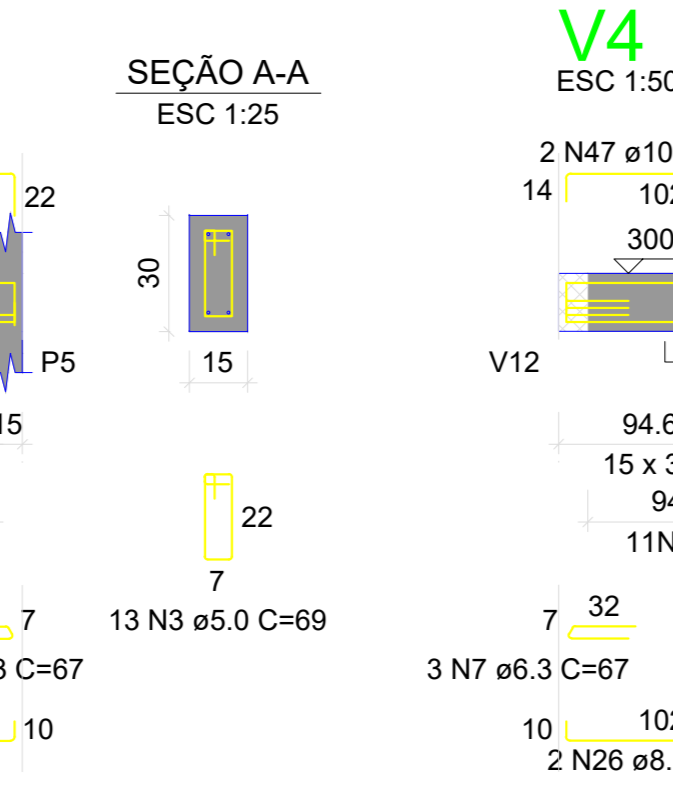
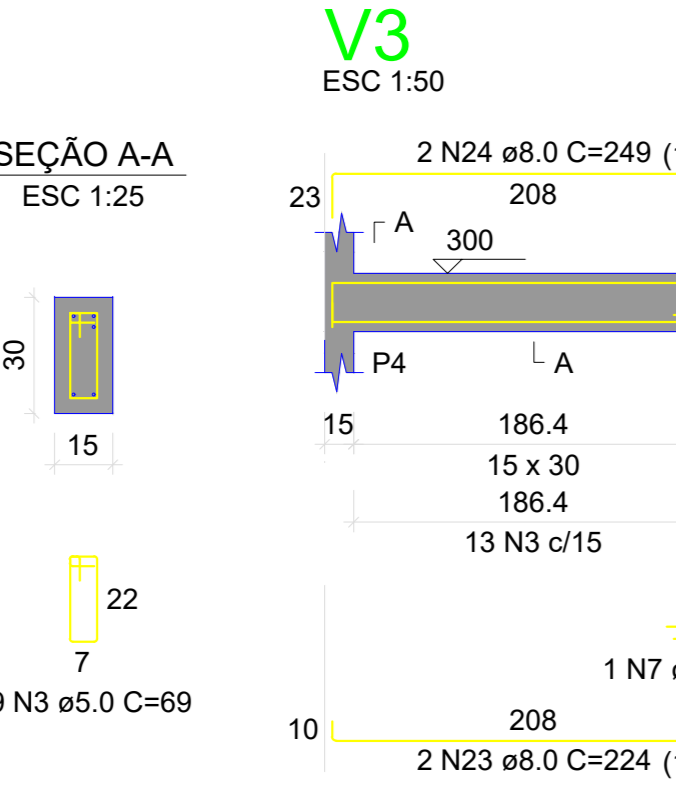
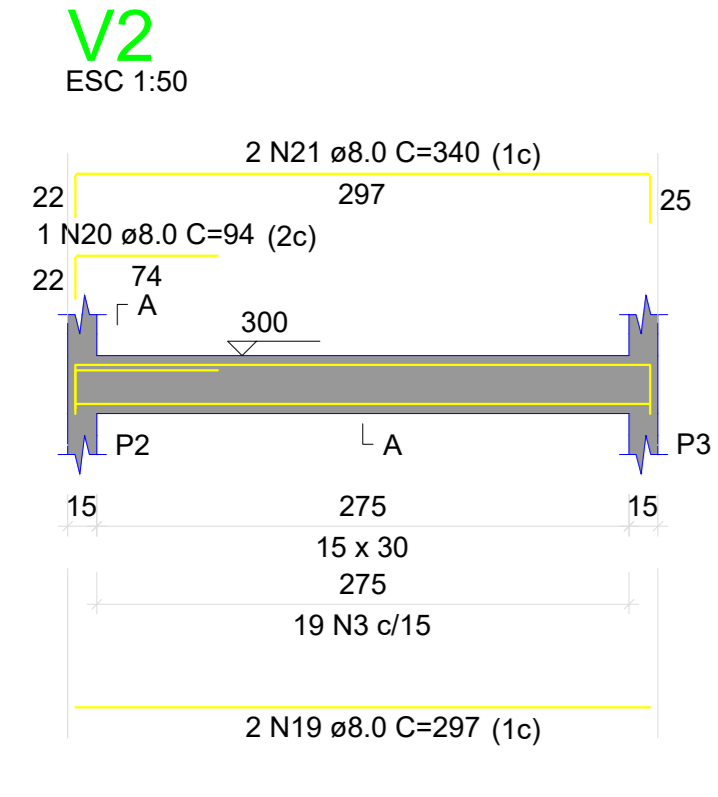
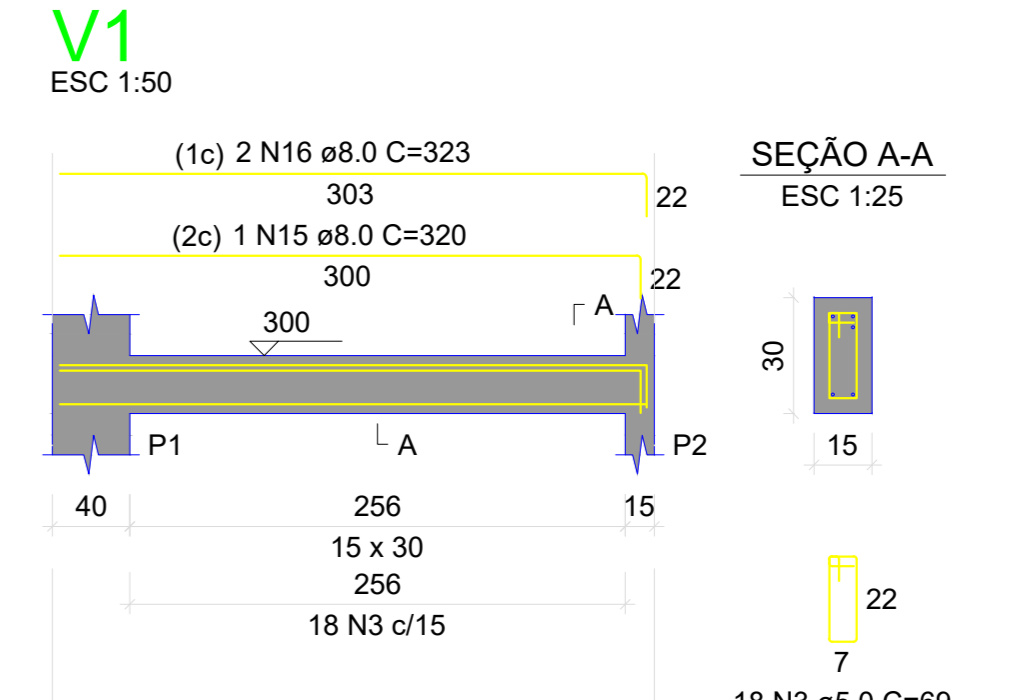
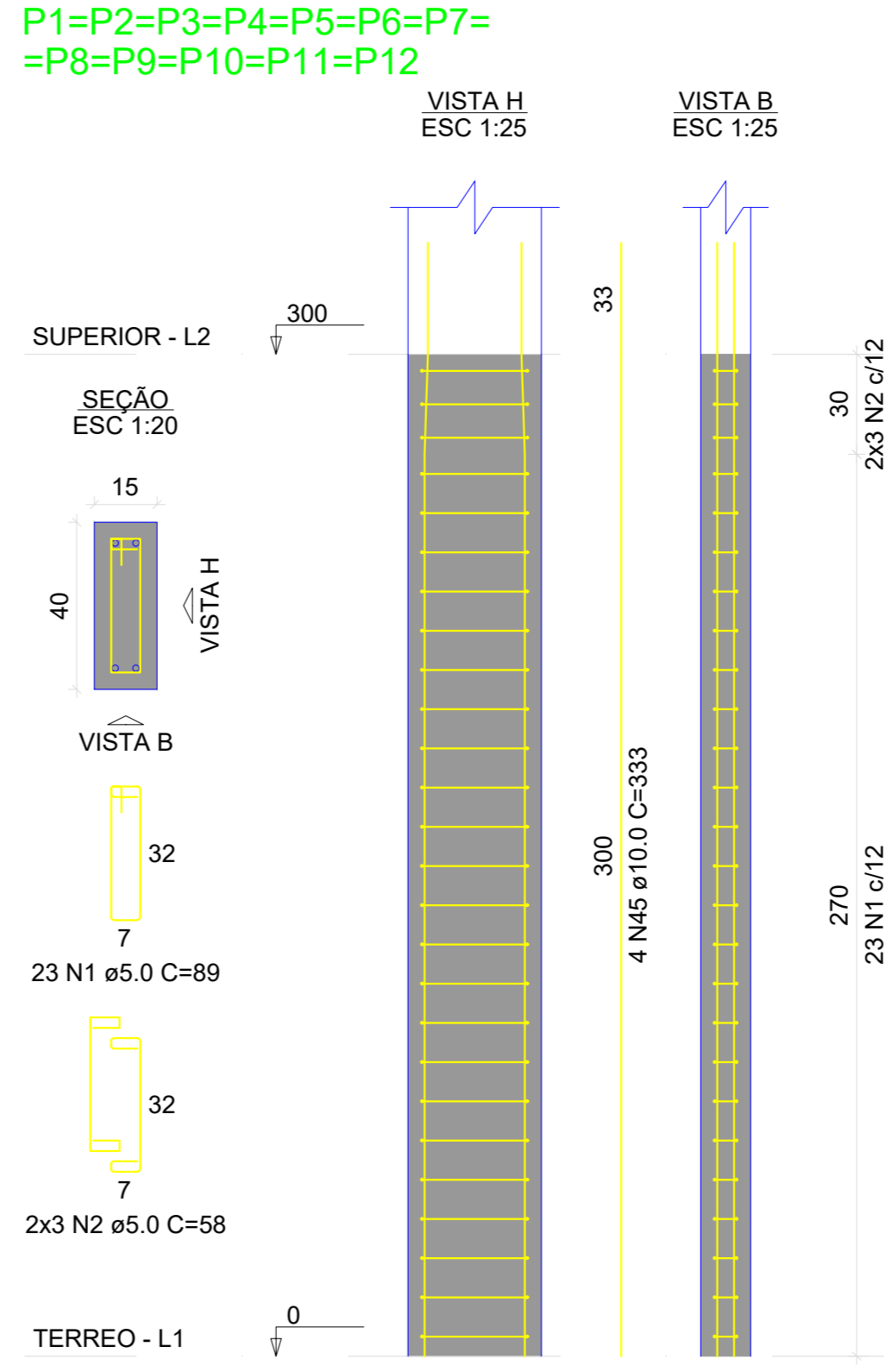
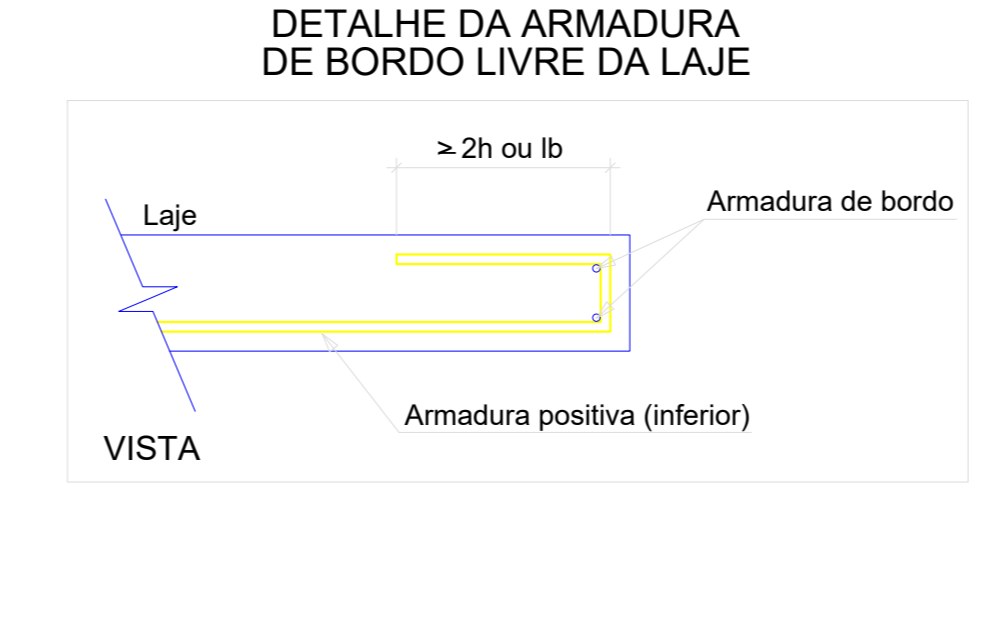
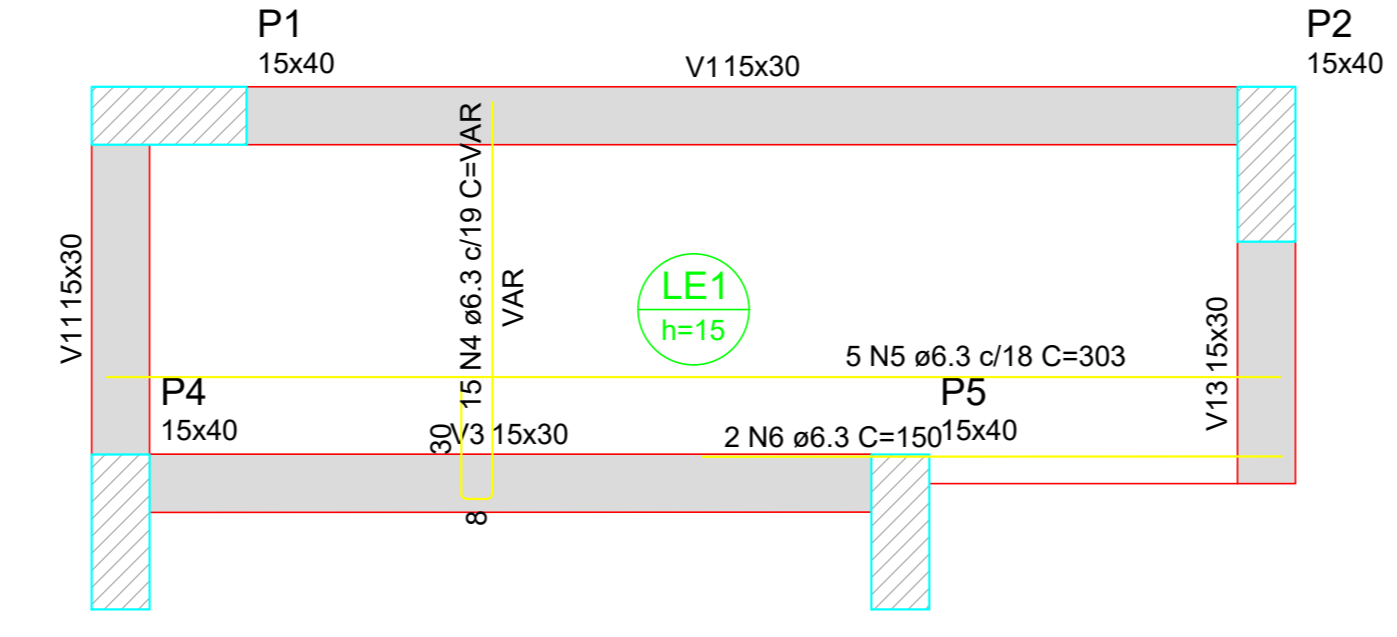
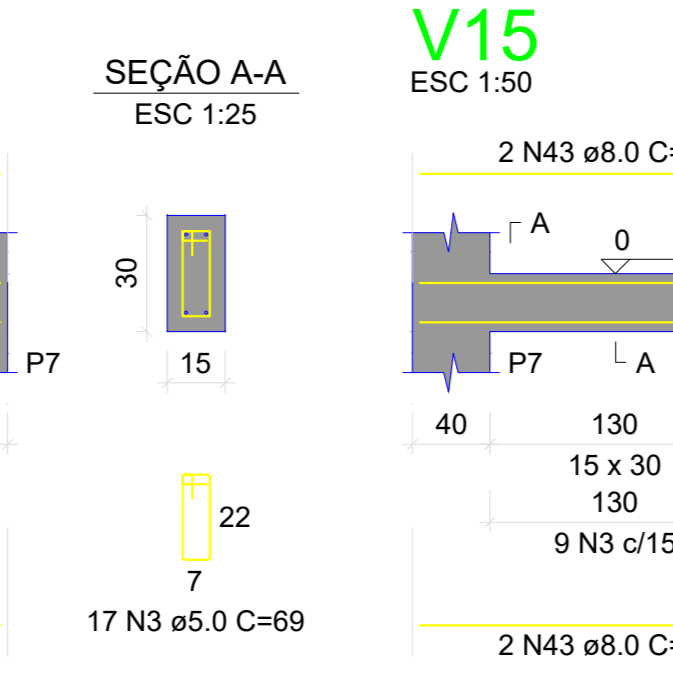
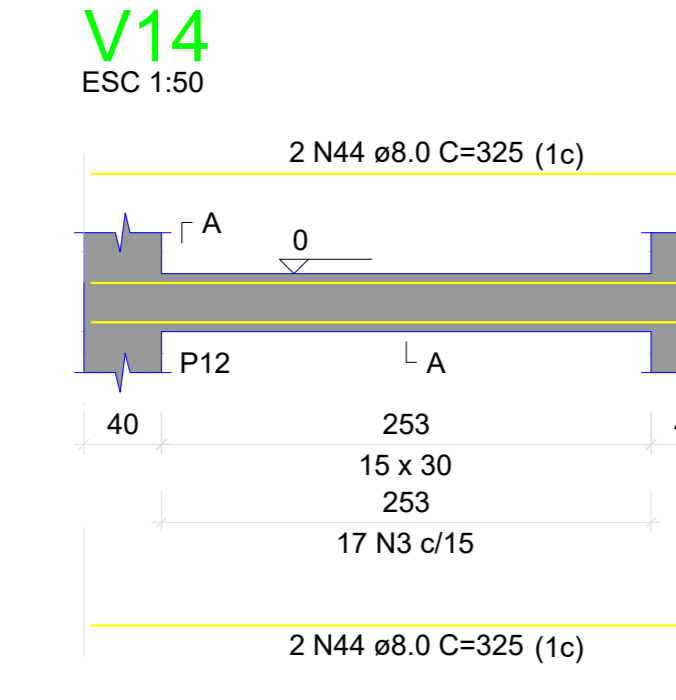
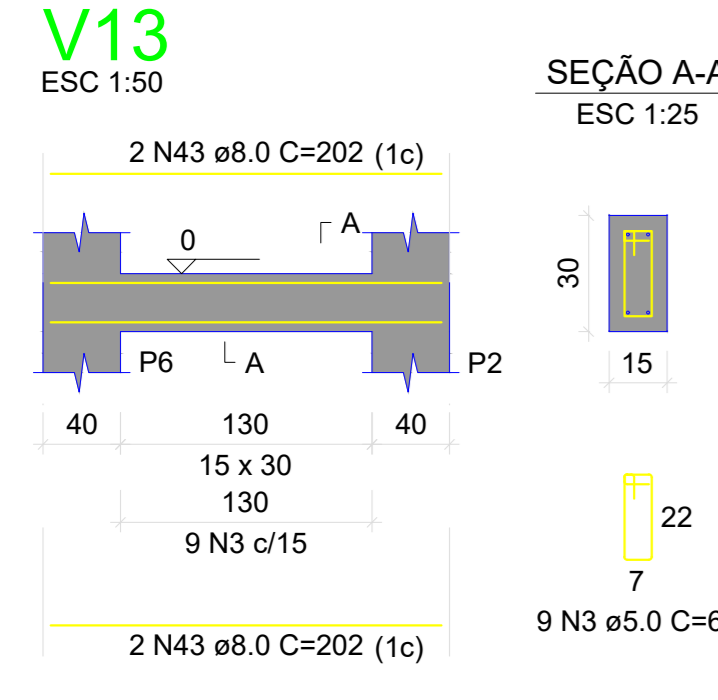
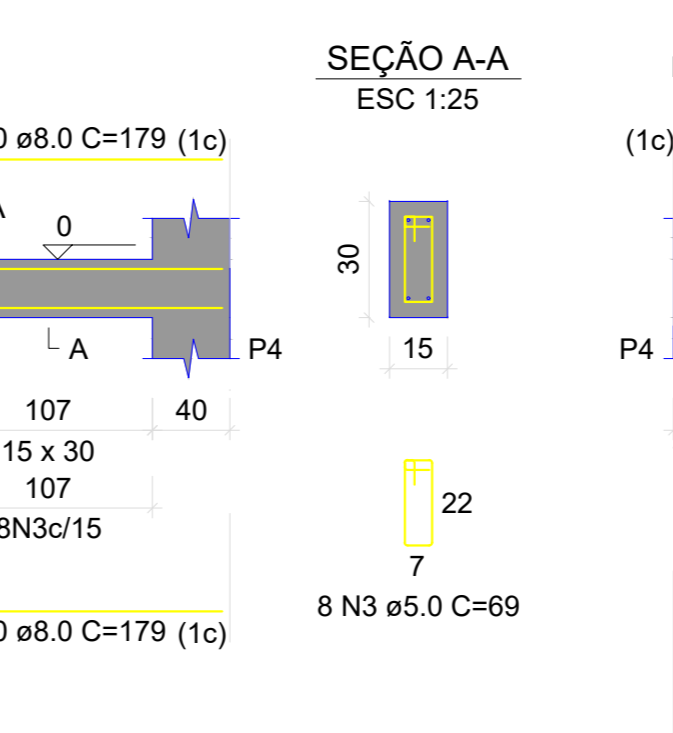
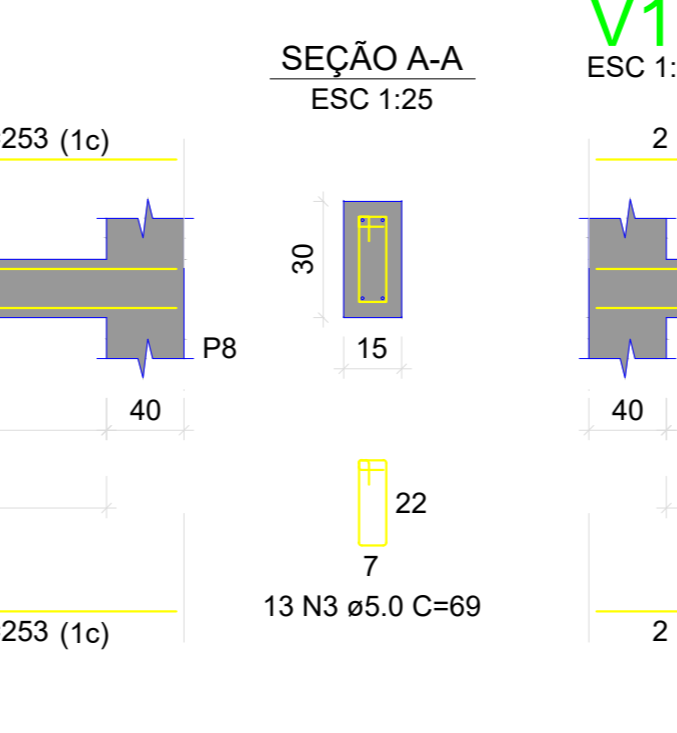
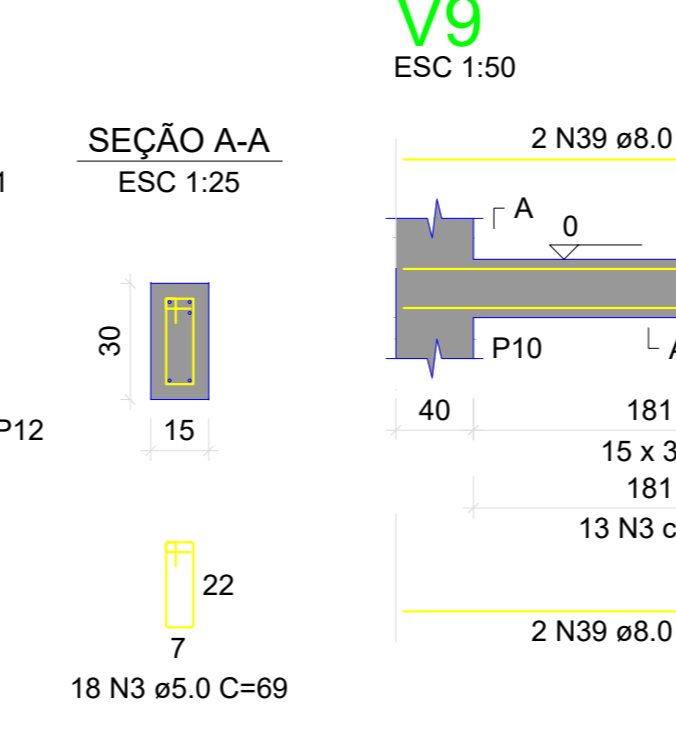
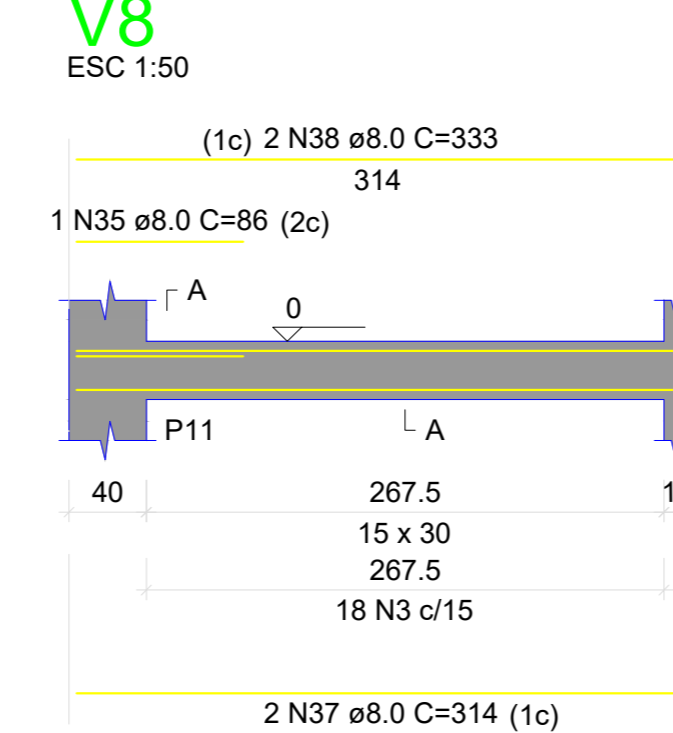
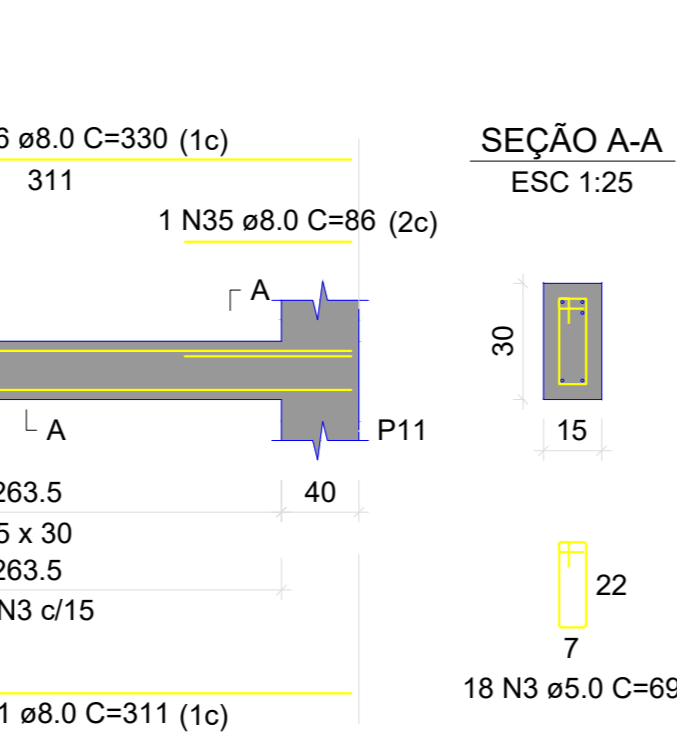
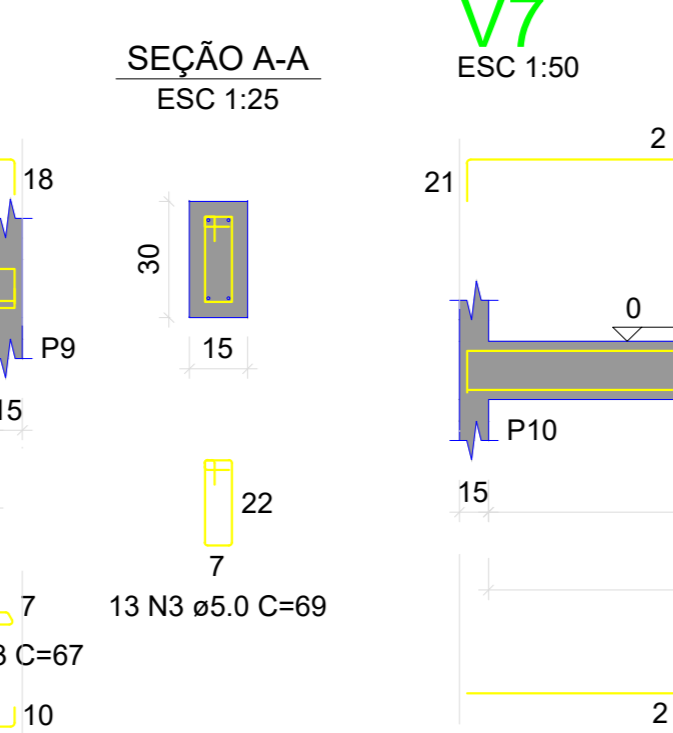
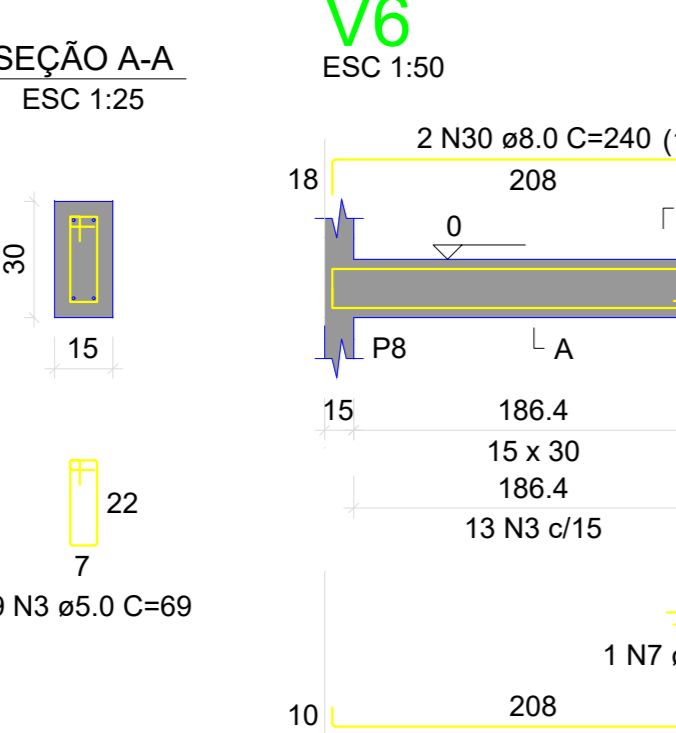
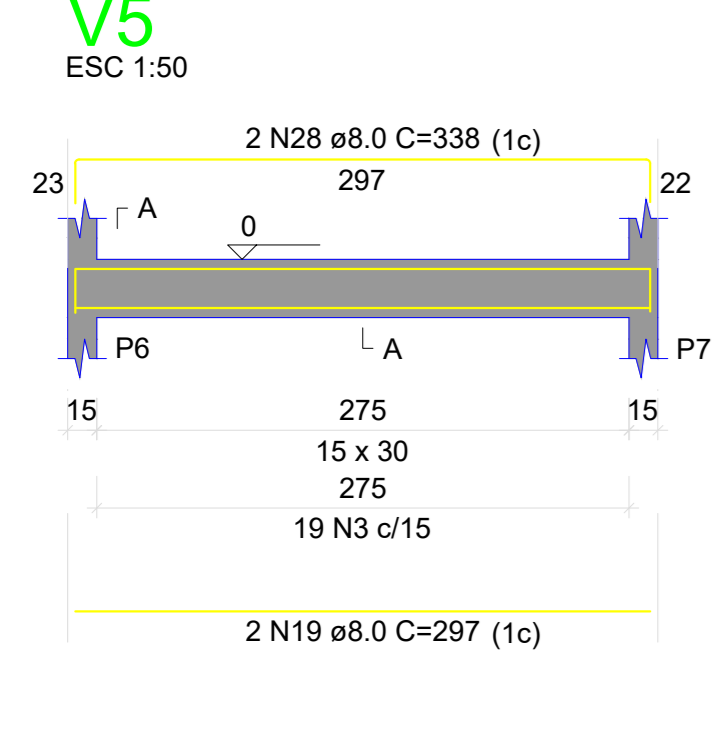
RELAÇÃO DO AÇO

ACO	N	DIAM (mm)	QUANT	C UNIF (cm)	C TOTAL (cm)
CAB0	1	5.0	348	89	30872
CAB0	2	5.0	144	88	8352
CAB0	3	5.0	304	89	26976
CAB0	4	6.3	15	VAR	VAR
CAB0	5	6.3	5	305	1515
CAB0	6	6.3	2	150	300
CAB0	7	6.3	13	67	871
CAB0	8	8.0	36	89	3204
CAB0	9	8.0	24	114	2736
CAB0	10	8.0	55	104	5720
CAB0	11	8.0	40	120	4800
CAB0	12	8.0	30	94	2820
CAB0	13	8.0	21	119	2499
CAB0	14	8.0	4	303	1212
CAB0	15	8.0	1	320	320
CAB0	16	8.0	2	323	646
CAB0	17	8.0	1	317	317
CAB0	18	8.0	2	320	640
CAB0	19	8.0	6	297	1782
CAB0	20	8.0	1	84	84
CAB0	21	8.0	2	340	680
CAB0	22	8.0	2	349	698
CAB0	23	8.0	6	224	1344
CAB0	24	8.0	2	249	498
CAB0	25	8.0	2	241	482
CAB0	26	8.0	4	119	472
CAB0	27	8.0	2	134	268
CAB0	28	8.0	2	338	676
CAB0	29	8.0	2	256	512
CAB0	30	8.0	2	240	480
CAB0	31	8.0	4	311	1244
CAB0	32	8.0	1	106	106
CAB0	33	8.0	1	156	156
CAB0	34	8.0	2	335	670
CAB0	35	8.0	2	86	172
CAB0	36	8.0	2	330	660
CAB0	37	8.0	2	314	628
CAB0	38	8.0	2	333	666
CAB0	39	8.0	4	253	1012
CAB0	40	8.0	6	179	1074
CAB0	41	8.0	2	135	270
CAB0	42	8.0	2	143	286
CAB0	43	8.0	6	202	1212
CAB0	44	8.0	4	325	1300
CAB0	45	10.0	48	333	15984
CAB0	46	10.0	48	147	7056
CAB0	47	10.0	2	133	266
CAB0	48	10.0	2	316	632
CAB0	49	10.0	1	170	170
CAB0	50	10.0	2	355	710

RESUMO DO AÇO

ACO	DIAM (mm)	C TOTAL (m)	PESO + 10% (kg)
CAB0	6.3	47.4	12.8
CAB0	10.0	248.2	168.3
CAB0	5.0	603	102.2
PESO TOTAL (kg)			371.7
CAB0			102.2

Volume de concreto (C-30) = 5.67 m³
 Volume de concreto (C-25) = 3.15 m³
 Área de forma = 105.46 m²



Armação positiva da escada E1
 ESC 1:25