

**01 PLANTA SITUAÇÃO**  
Esc: 1/5000

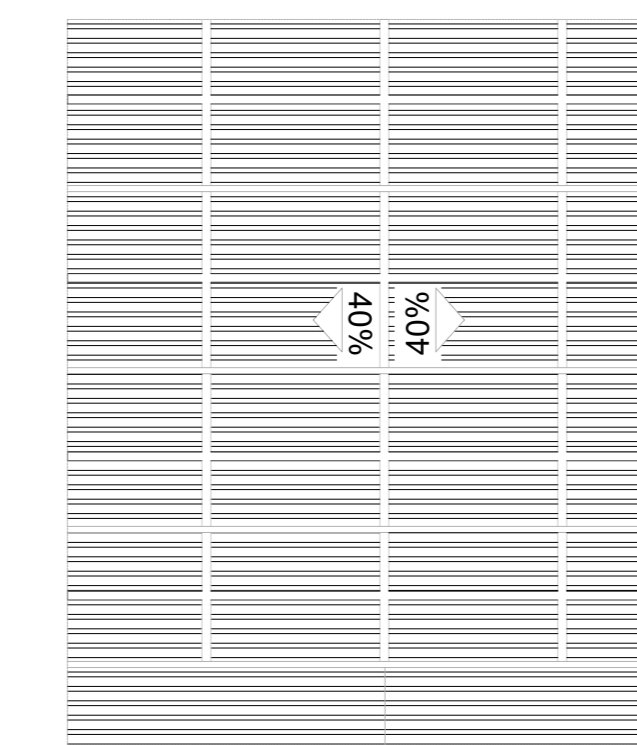


VÉRTICE 75 - LAT 28°25'17.19"S / LONG 48°44'43.39"O  
 VÉRTICE 76 - LAT 28°25'17.10"S / LONG 48°44'43.33"O  
 VÉRTICE 77 - LAT 28°25'17.15"S / LONG 48°44'43.21"O  
 VÉRTICE 78 - LAT 28°25'17.23"S / LONG 48°44'43.25"O

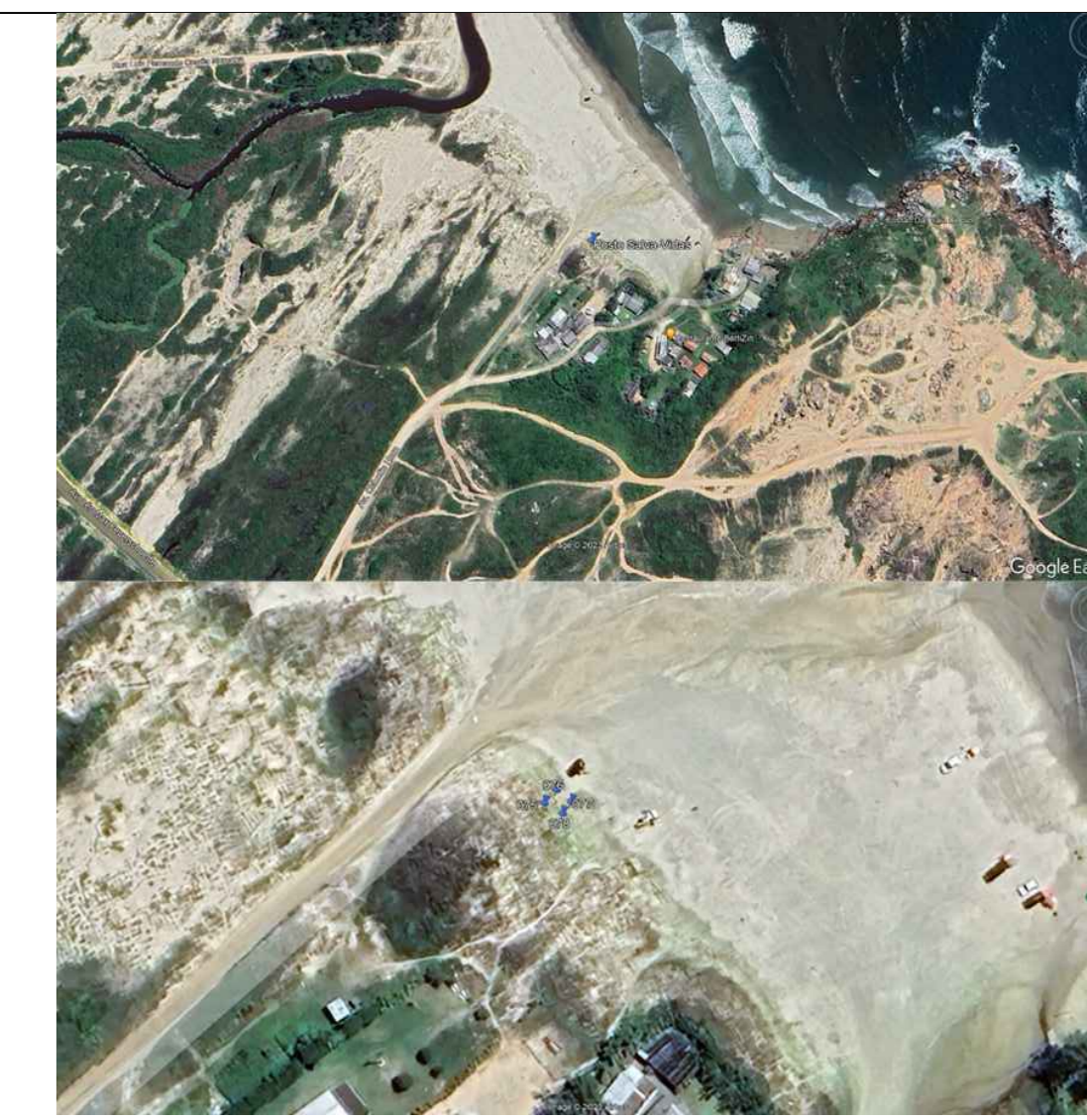
**02 PLANTA LOCALIZAÇÃO**  
Esc: 1/500

QUADRO DE ÁREAS

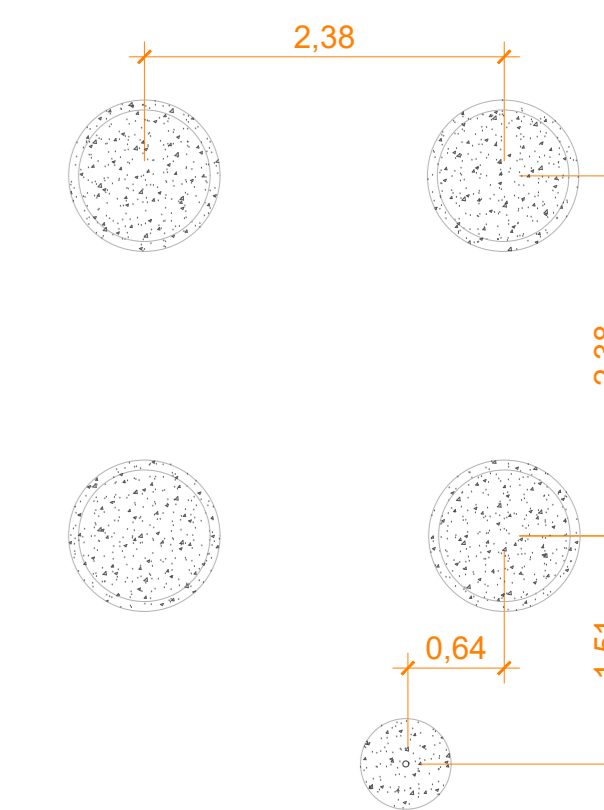
Código	Dimensões	Área	Quantidade	Material
P1	0,90 x 2,10	1,89 m²	02	Madeira
J1	1,00 x 1,00	1,00 m²	06	Madeira



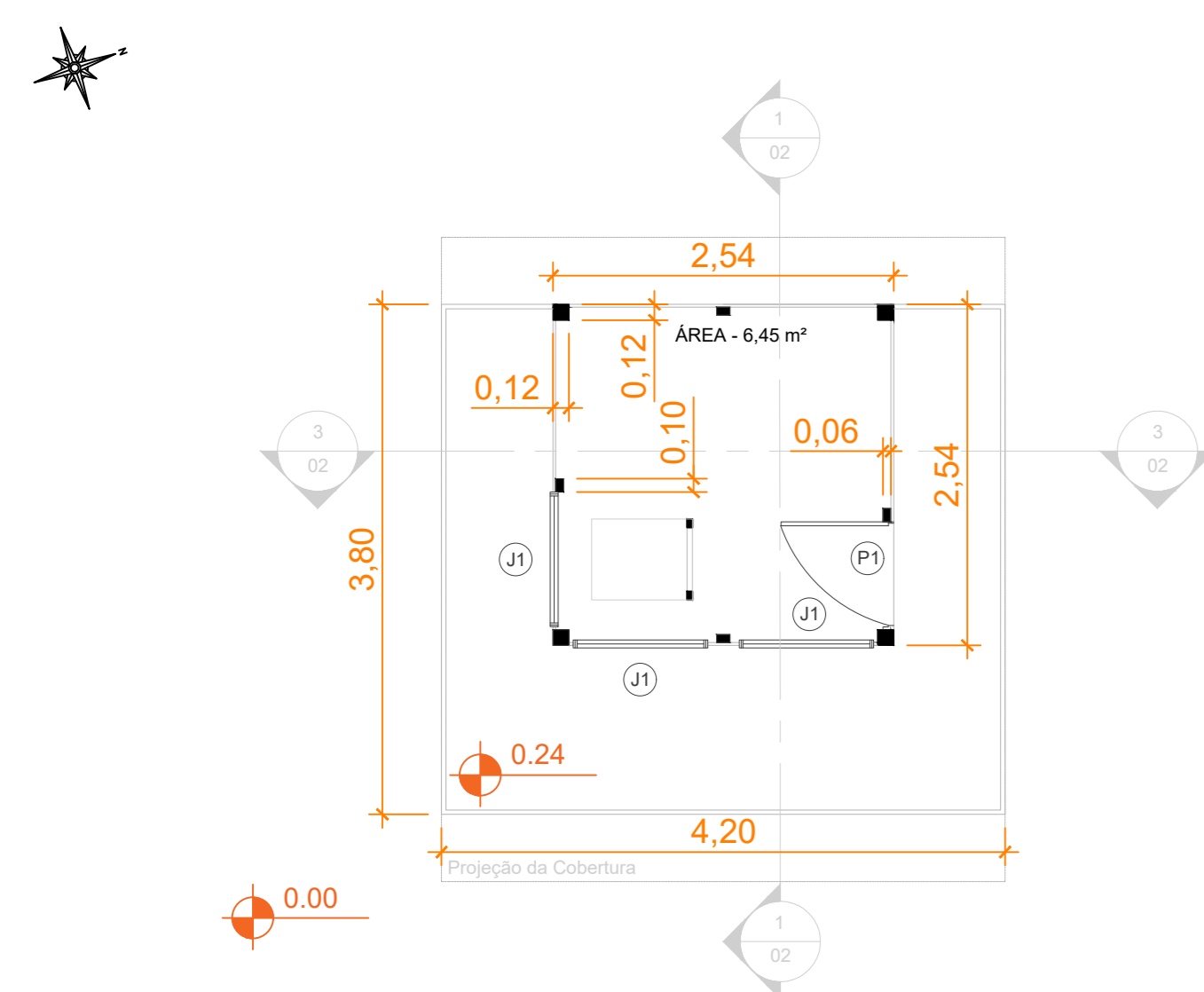
**03 PLANTA DE COBERTURA**  
Esc: 1/50



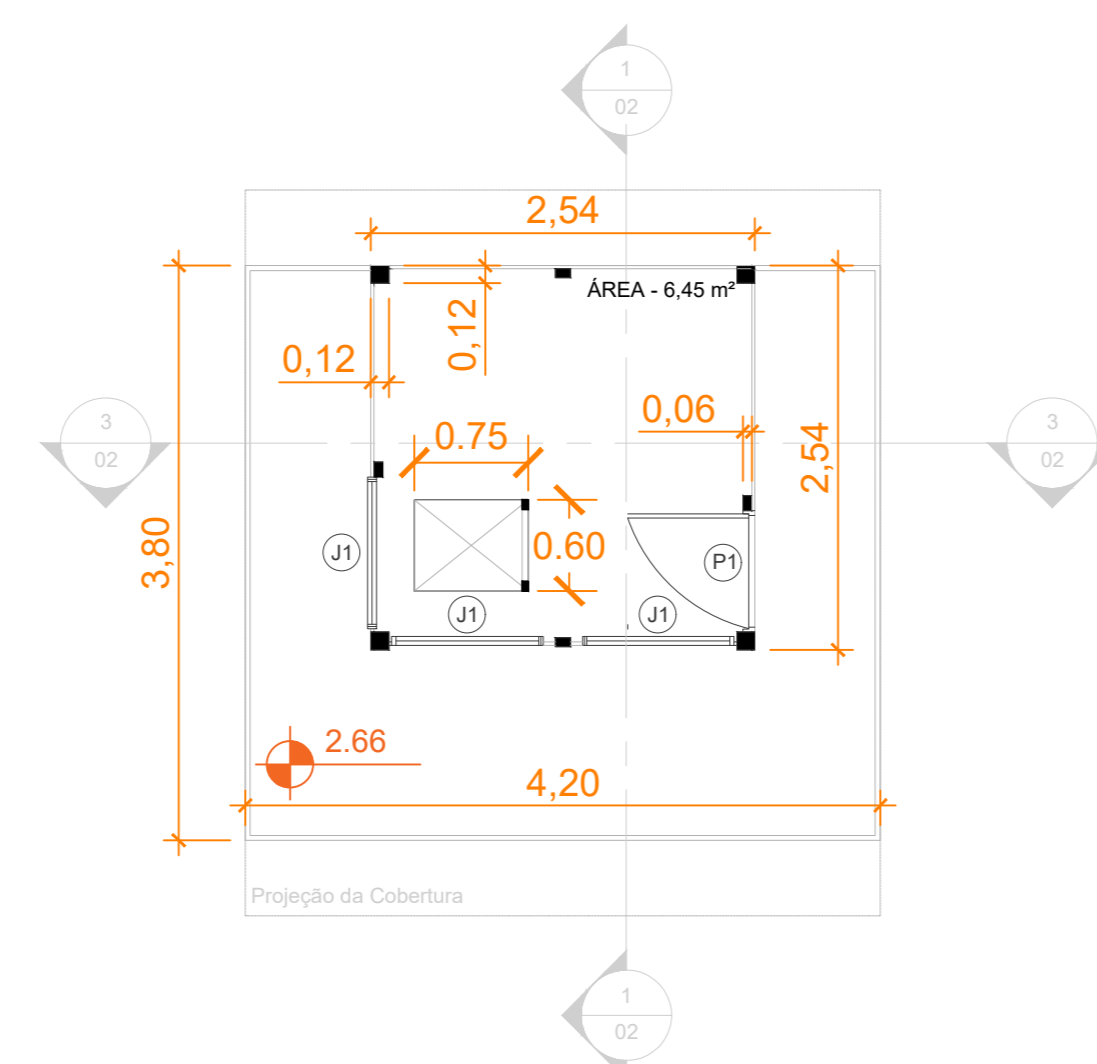
**04 VISUALIZAÇÃO AÉREA**  
Sem Escala



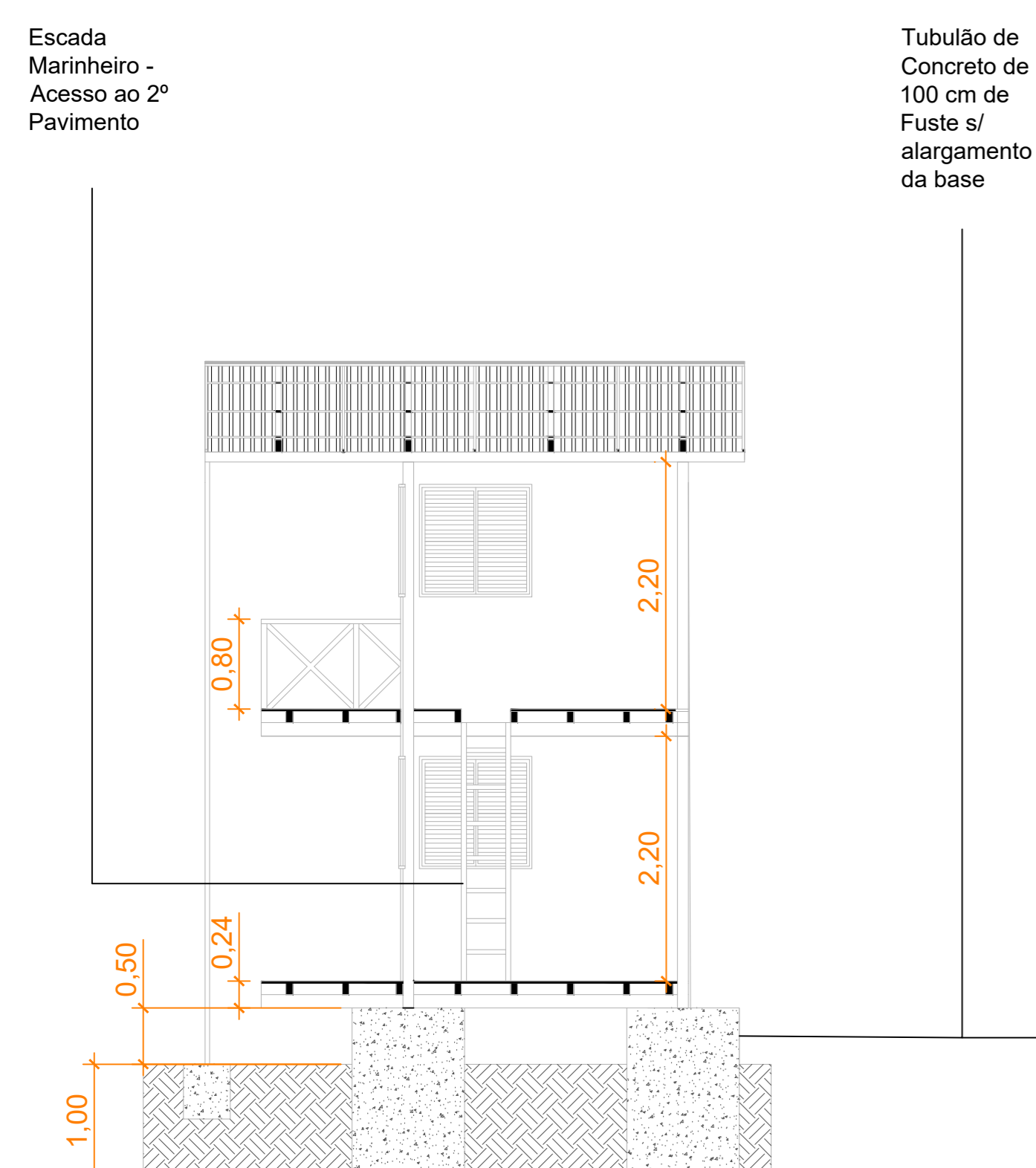
**10 PLANTA DE FUNDAÇÃO**  
Esc: 1/50



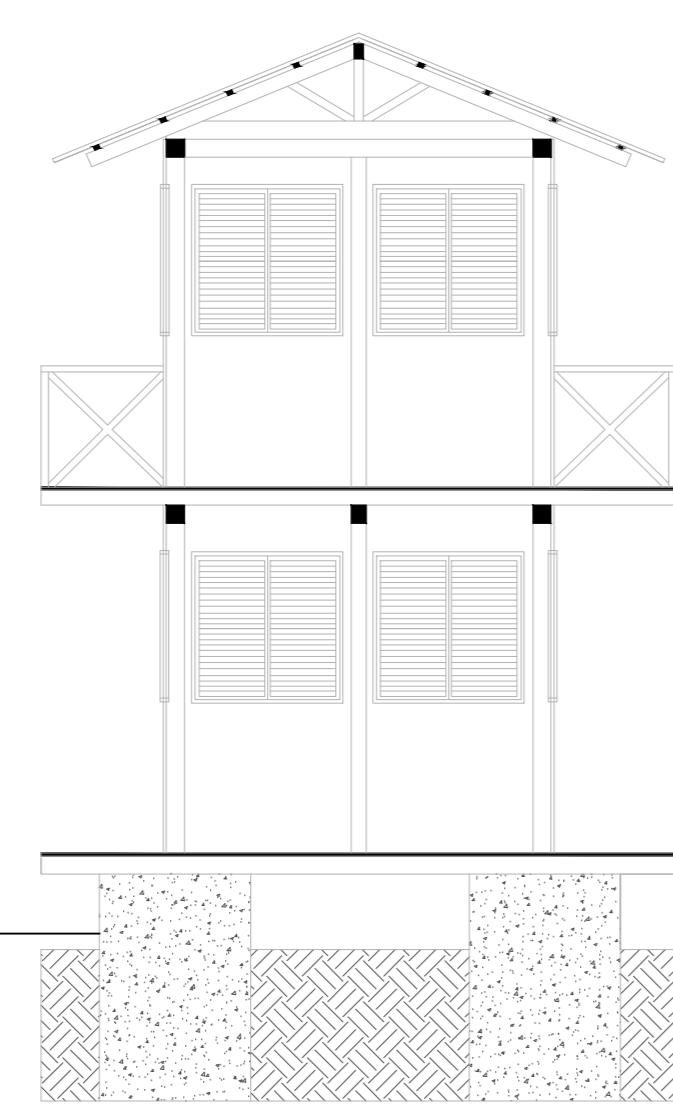
**05 PLANTA BAIXA 1º PAV.**  
Esc: 1/50



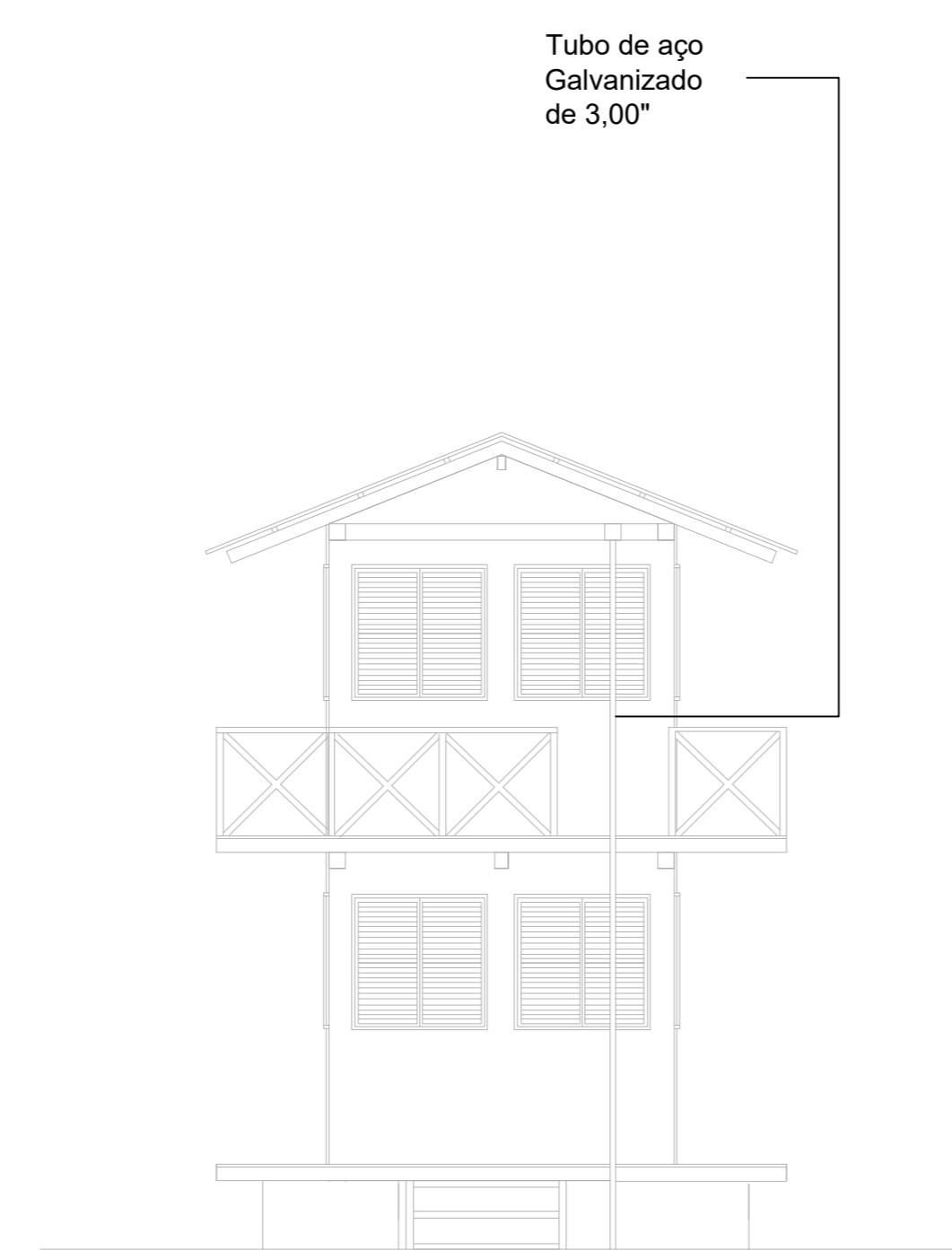
**06 PLANTA BAIXA 2º PAV.**  
Esc: 1/50



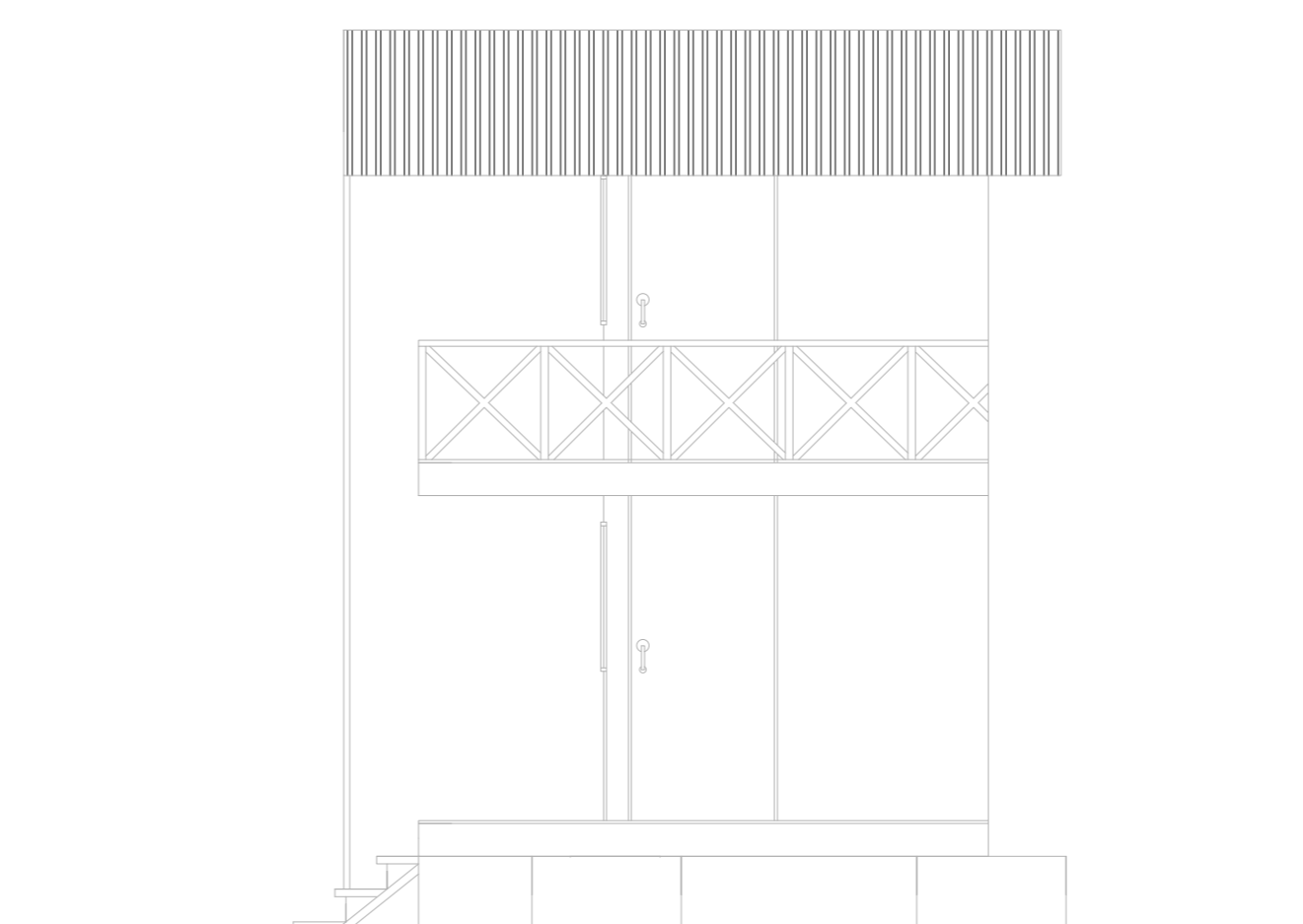
**11 CORTE 1/02**  
Esc: 1/50



**12 CORTE 3/02**  
Esc: 1/50

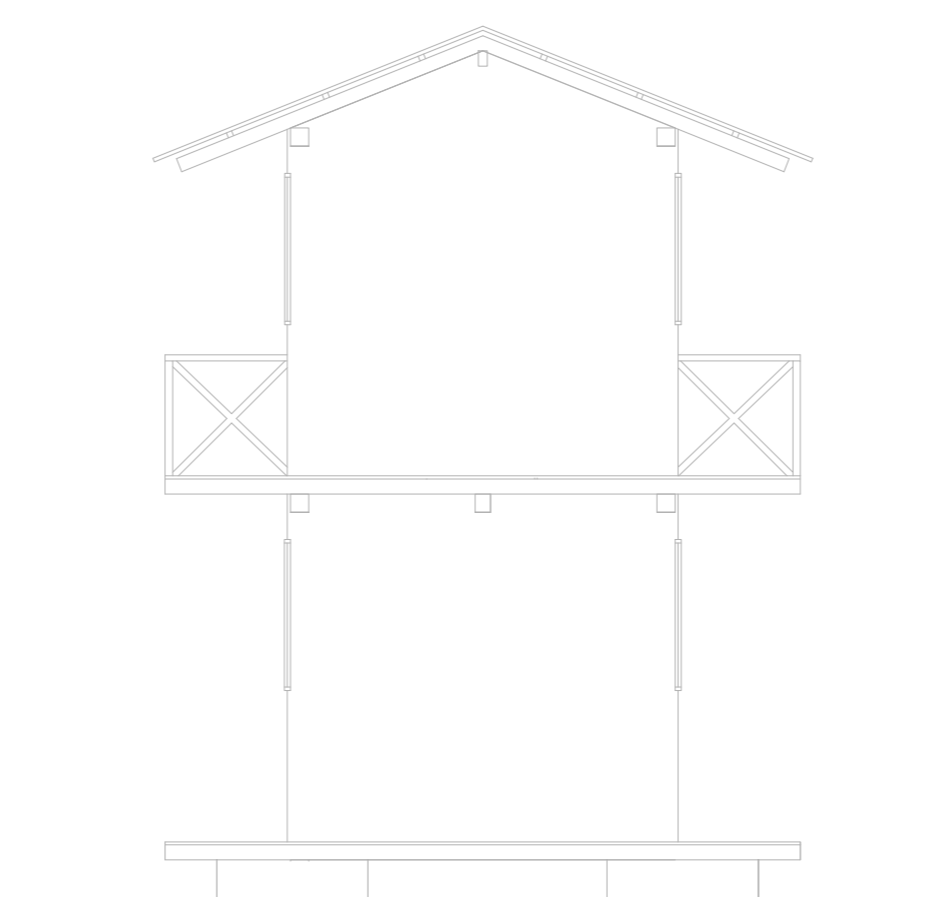


**13 VISTA FRONTAL**  
Esc: 1/50

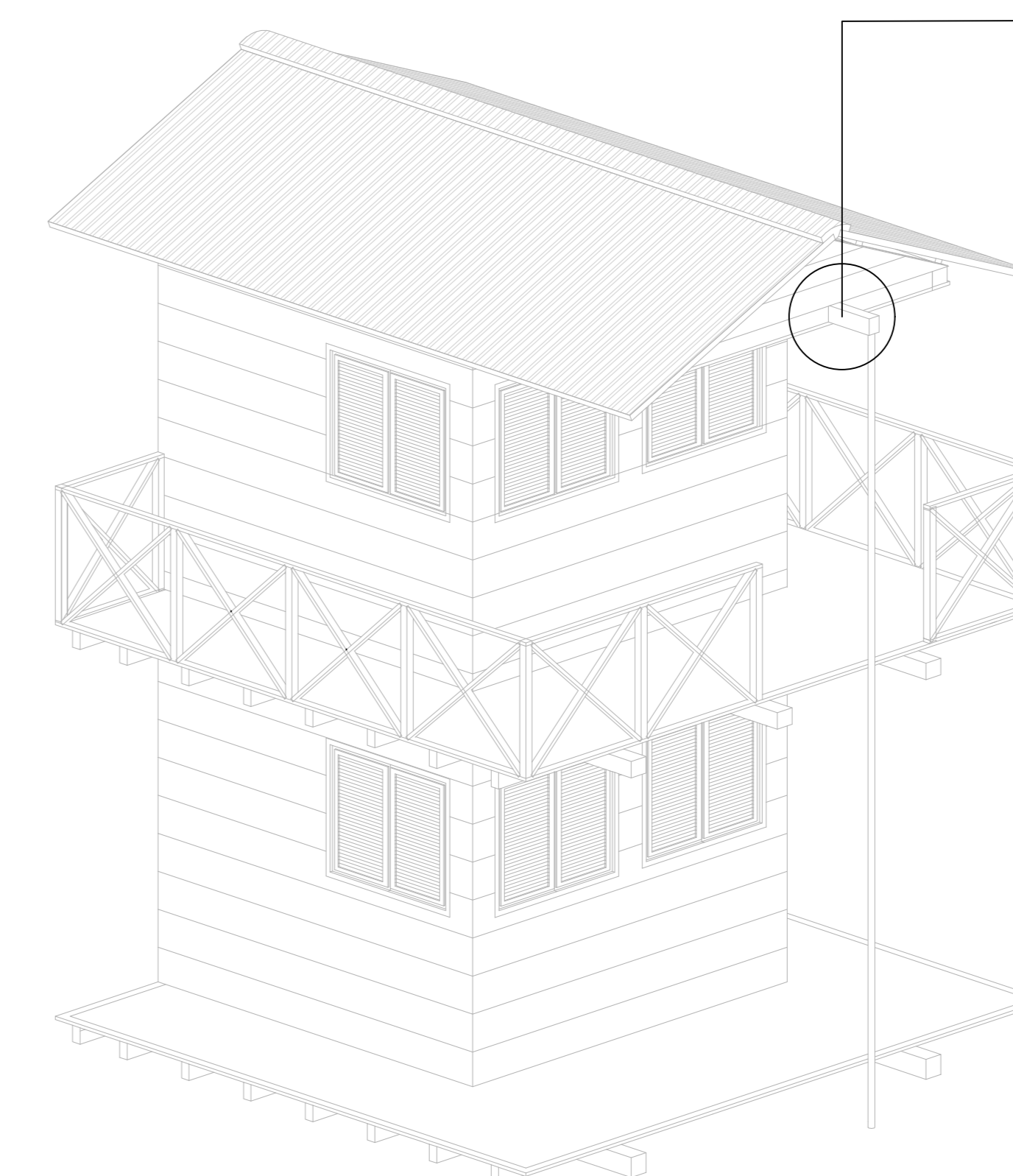


**08 VISTA LATERAL DIR.**  
Esc: 1/50

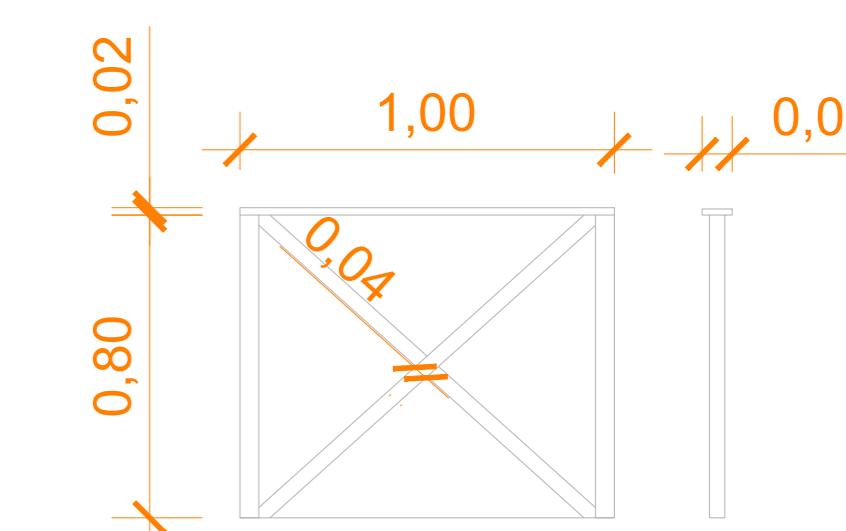
**07 VISTA LATERAL ESQ.**  
Esc: 1/50



**14 VISTA POSTERIOR**  
Esc: 1/50

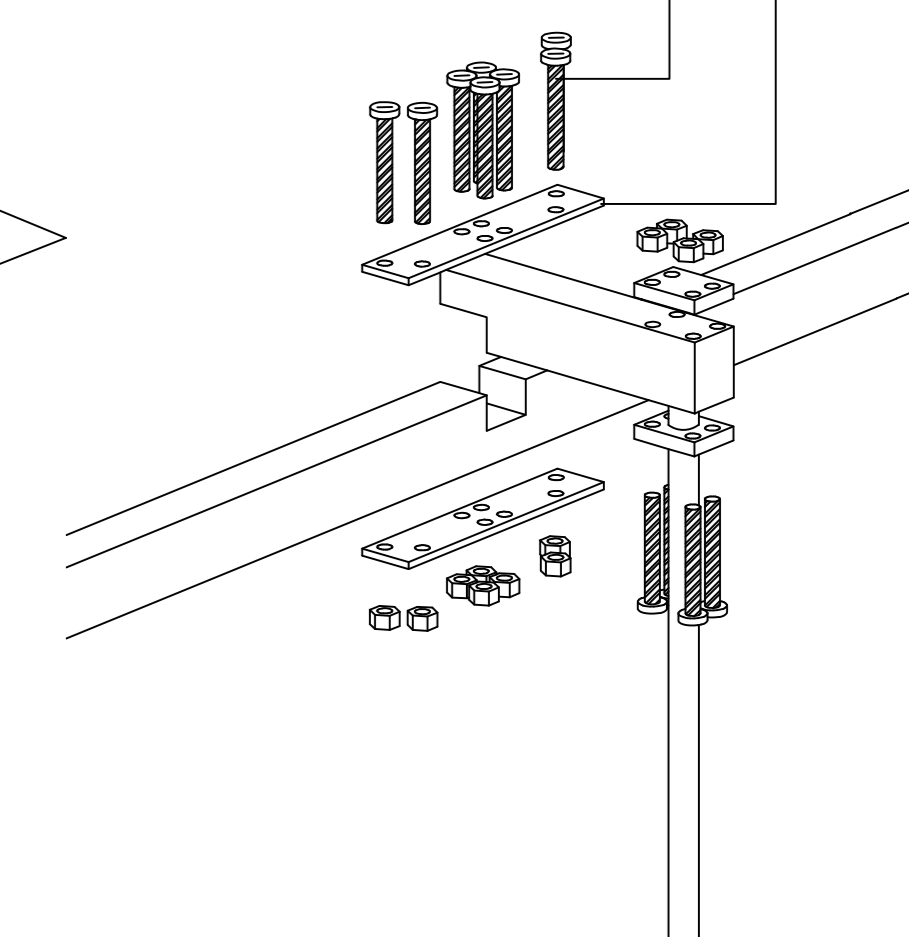


**15 PERSPECTIVA**  
Sem Esc.



**09 DETALHAMENTO I**  
Esc: 1/20

Conjunto Porca/Parafusos Inox. de 15 cm e Ø10 mm  
 Chapa Metálica Inox. Esp. 5,00 mm e 40 cm de Comp.



**16 DETALHAMENTO II**  
Esc: 1/10